

# "Most Innovative Energy Saving Product" - CII



Nebeskie Labs Product  
**Enture**  
IoT-Energy Management

\*21st National Award for Excellence in Energy Management 2020 - CII

**Smart Metering**

**Smart Building**

**Industry 4.0**

Electricity Management | Energy Analytics | IoT-Edge solution

**AMS**

Anuryan Marketing and Services

-----Est. Since 1999-----

18, New Santoshpur Main Rd, Eastern Park,  
Santoshpur, Kolkata, West Bengal 700075

email : emscloud@anuryan.com

phone:+91 98749 37285

## We Monitor and Save Electricity

Nebeskie Labs Pvt Ltd | www.nebeskie.com



## Enture IoT Energy Management

Digitize your infrastructure with plug & play IoT devices, automate the energy data collection and reap benefits with reliable and accurate analytics.

Enture enables seamless integration of operation technology with information technology through IoT and a simple dashboard for every stakeholder.

Implementing Energy Management has never been easy, start monitoring with plug & play devices without infrastructure changes or upgrade.

It's all about

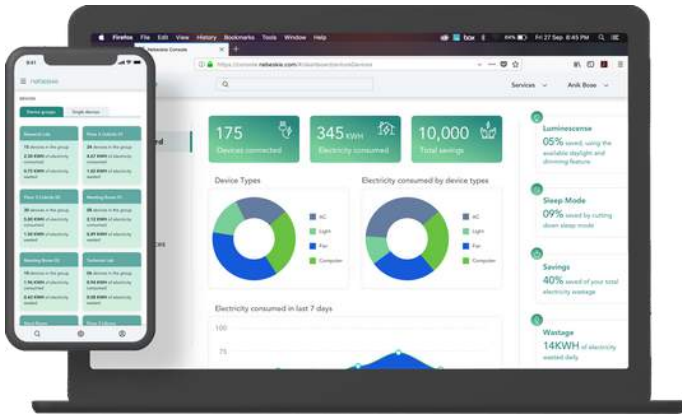
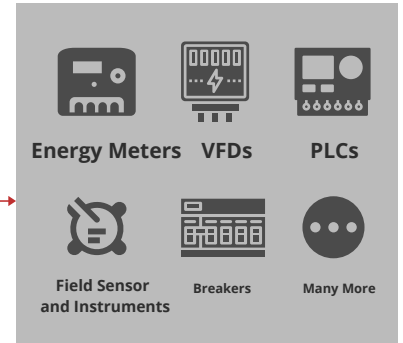
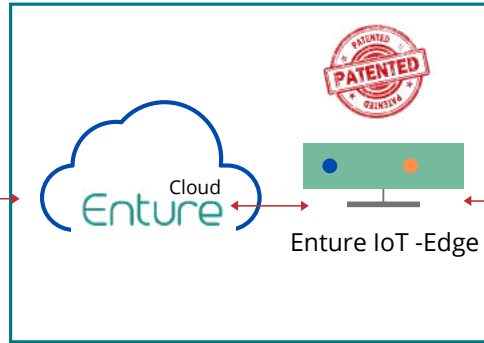
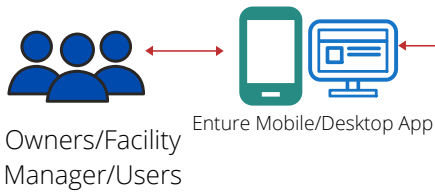
# Energy Data

Buildings and Factories that implement energy management systems end up with far greater energy savings and process optimization. Data monitoring, recording, and analytics are essential for the success of any energy management program.

**Enture-IoT Energy Management with reliable IoT stacks makes energy data monitoring fast and accurate.**

# IoT + Edge + Cloud      Industry4.0 and Smart Metering

IoT + Edge + Cloud  
I4.0 & Smart Metering



- Single dashboard to track and monitor
- Specific Energy Consumption Report
- Easy understanding of trends with charts
- Groupwise energy reports, TOD, monthly and yearly reports
- Set email, mobile number for real time notification

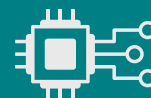
## Enture IoT Energy Management



Real-time data



Automated Reports



Edge - IoT



Record devices, machines, and process data



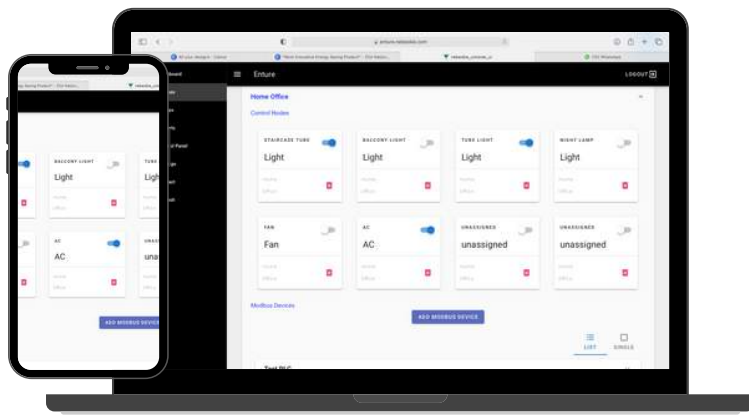
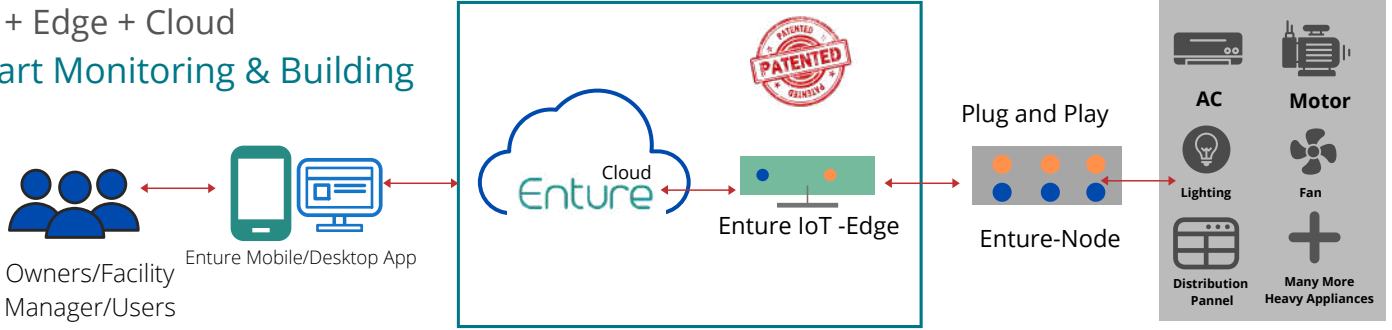
Multiple OEM Integration



Targeted Energy Monitoring


# IoT + Edge + Cloud      Smart Monitoring and Building

## IoT + Edge + Cloud Smart Monitoring & Building




- Track all your devices in one dashboard
- Understand your average consumption based on the Time of Day (TOD).
- Remote control and schedule electrical devices
- Customize your report based on Area, Device Type, and Usage.
- Analyze the heavy device's consumption and wastage - Optimize runtime

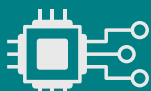
## Enture IoT Energy Management




**Real-time data**




**Automated Reports**




**Edge - IoT**



**Record devices, machines, and process data**

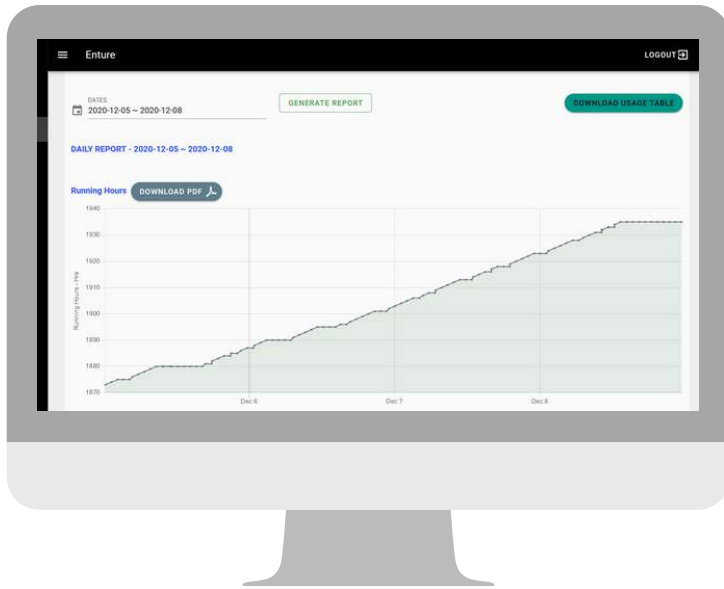


**Remote Control & Scheduling**



**Targeted Energy Monitoring**

# Enture IoT Energy Management

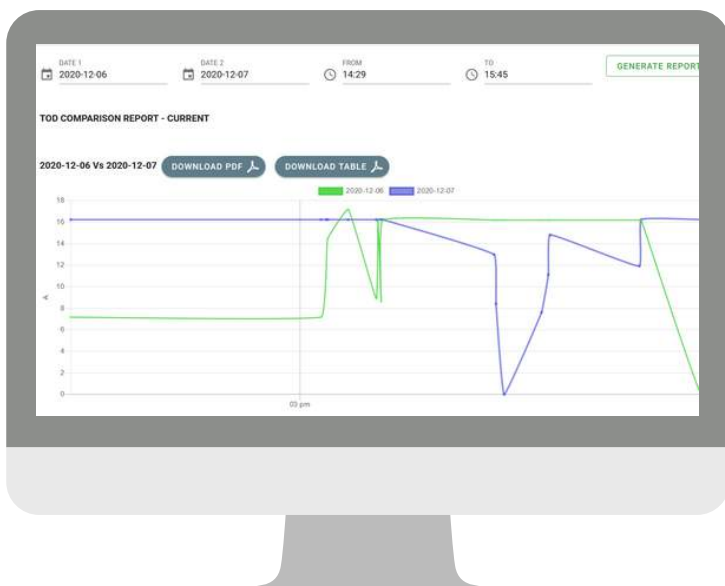


- Track your daily usage
- Generate trends on custom time frame
- Download trends and granular reports of your devices/process.
- Customize your report and get daily emails.
- Analyze the heavy device's consumption

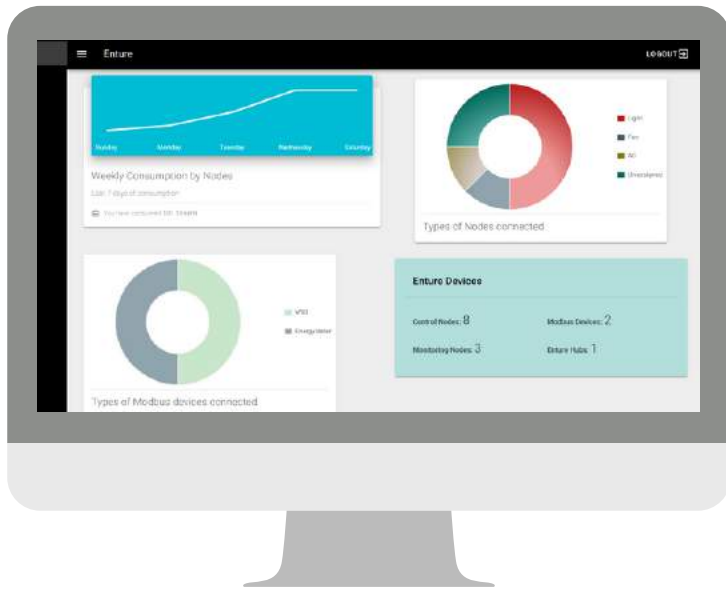
- Compare parameters and find relationship/patterns in data
- Relate sensor and usage data for environmental monitoring
- Identify problems and wastage in a process
- Patterns helps predict maintenance cycle



- Compare historical data of process variables in simple to use UI
- Identify how process parameters change throughout the day
- Identify deviation of process parameter with historical data at specific time of the day

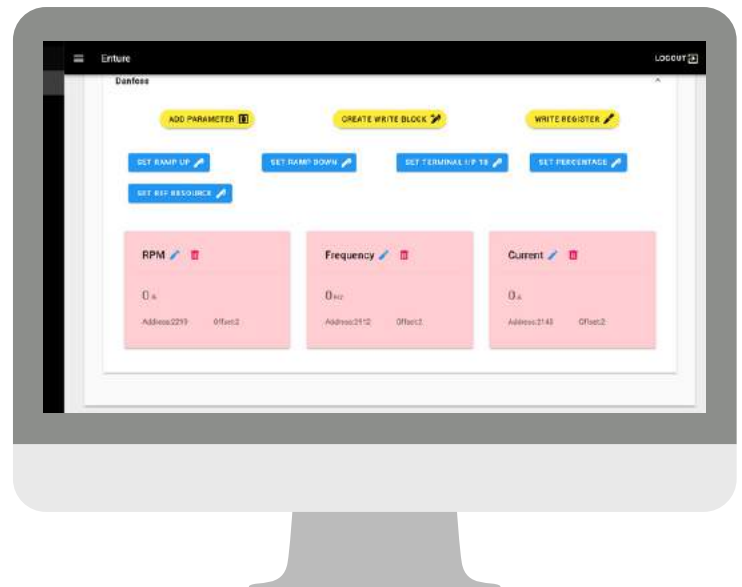


# Enture IoT Energy Management



- See all of your connected IoT and devices in one dashboard
- Get an overview of the entire organization's devices
- See the overall usage trends

- Configure and write to your VFDs remotely
- Get real time data of each process parameter
- Create customized groups of your devices for easy access



Confederation of Indian Industry

**"Most Innovative Energy Saving Product"**

21st National Award for Excellence in Energy Management 2020 - CII

# "Most Innovative Energy Saving Product" - CII

Nebeskie Labs Pvt Ltd | [www.nebeskie.com](http://www.nebeskie.com)



Confederation of Indian Industry  
125 Years - Since 1895

## 21<sup>st</sup> National Award for Excellence in Energy Management 2020

*This is to certify that*

**IOT Edge and Fog Technology**  
*offered by*

**Nebeskie Labs Pvt. Ltd.**

*has been recognized as*

*"Most Innovative Energy Saving Product"*

*This acknowledgement is based on the evaluation by panel of judges at the "National Award for Excellence in Energy Management" held during 25 - 28 August 2020.*

A handwritten signature in blue ink, appearing to read 'K S Venkatagiri'.

K S Venkatagiri  
Executive Director  
CII - Godrej GBC

A handwritten signature in blue ink, appearing to read 'R. Purushothaman'.

Ravichandran Purushothaman  
Chairman, Energy Efficiency Council  
CII - Godrej GBC

# nebeskie

Nebeskie Labs Pvt Ltd [www.nebeskie.com](http://www.nebeskie.com)  
email : [info@nebeskie.com](mailto:info@nebeskie.com) phone: 9884925286

# We Monitor and Save Electricity

Nebeskie Labs Pvt Ltd | [www.nebeskie.com](http://www.nebeskie.com)

# AMS

Anuryan Marketing and Services

-----Est. Since 1999-----

Anuryan Marketing and Services  
18, New Santoshpur Main Rd, Eastern Park,  
Santoshpur, Kolkata, West Bengal 700075  
email : [emscloud@anuryan.com](mailto:emscloud@anuryan.com)  
phone:+91 98749 37285

## AMS Customers

